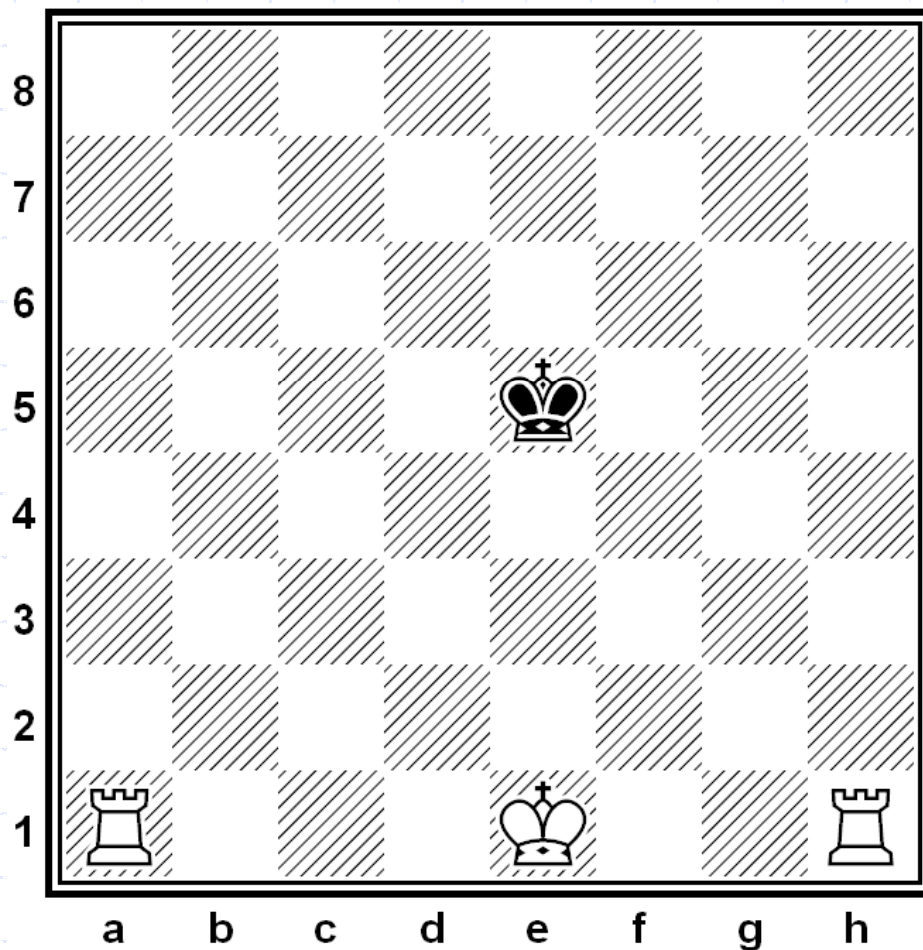


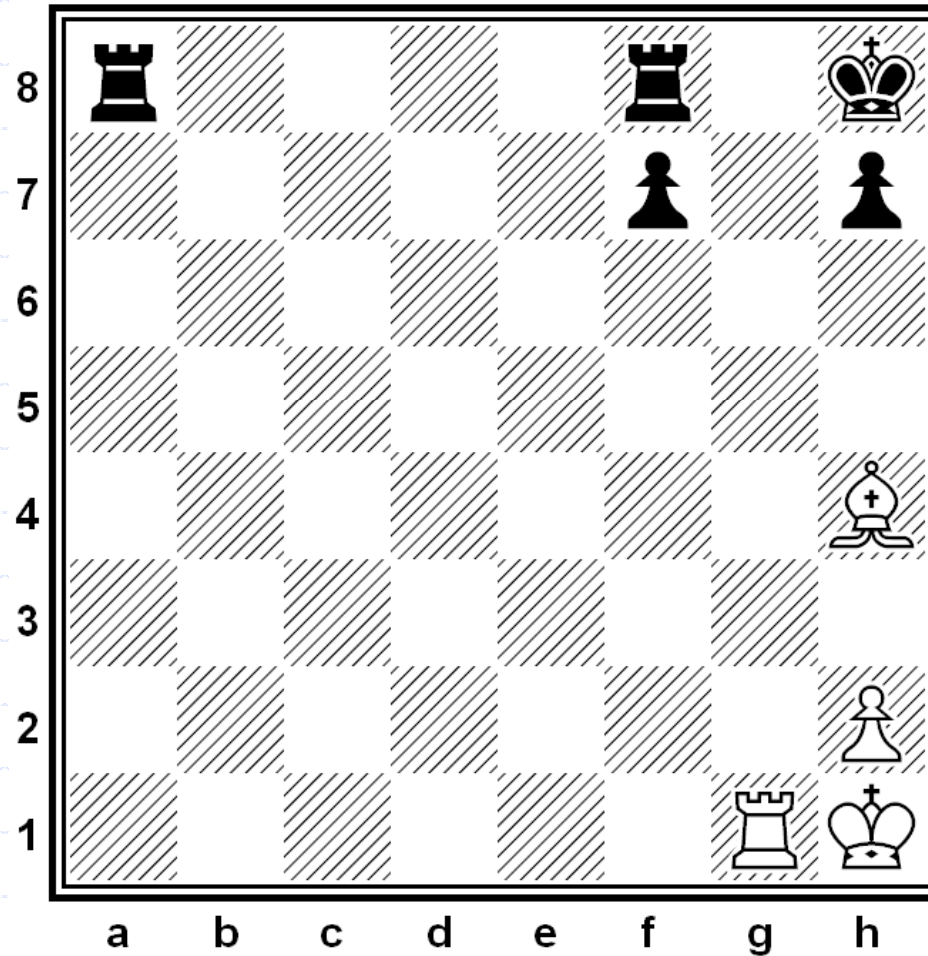
# Requirement 5c



With White to move first, demonstrate how to force checkmate on the black king.

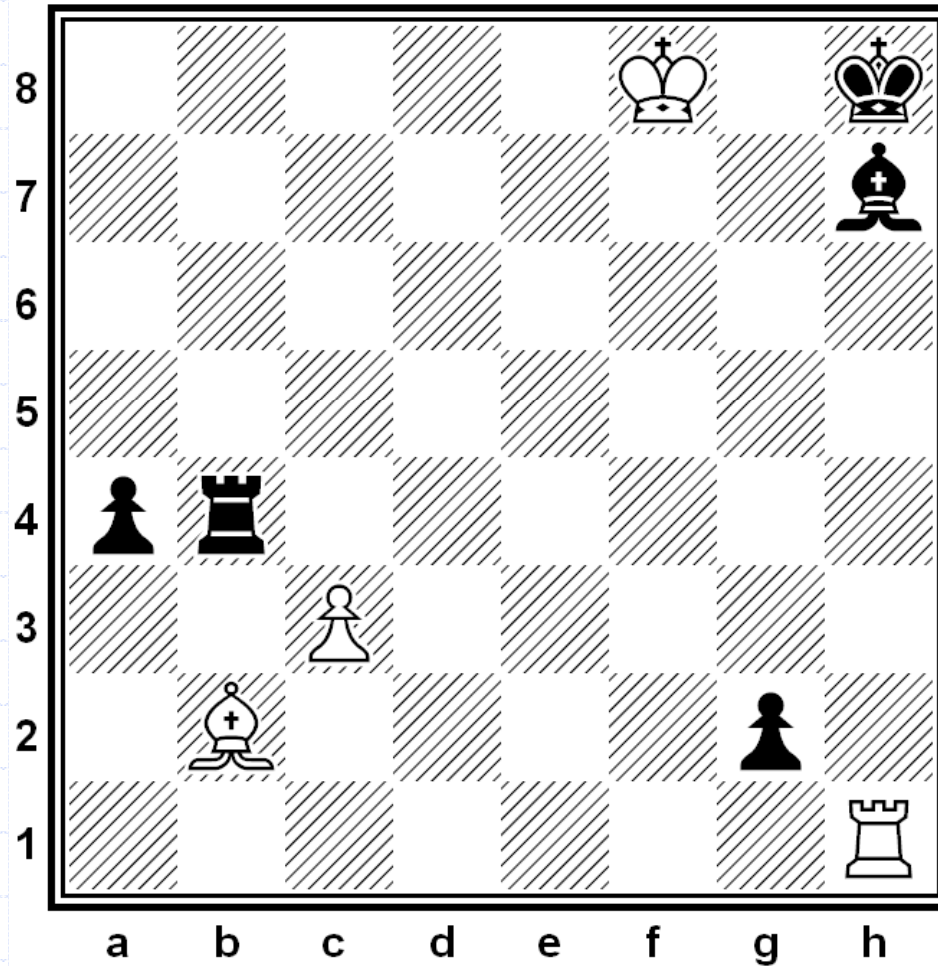
# Mate in 1

Problem #1



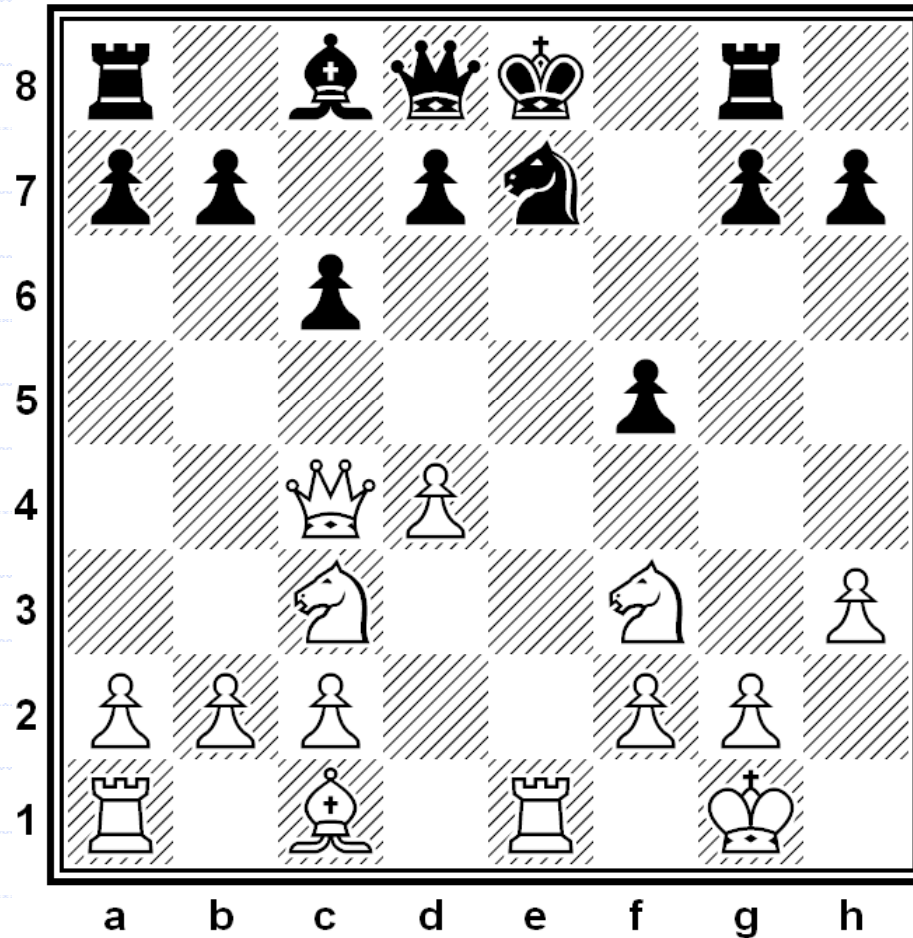
# Mate in 1

## Problem #2



# Mate in 1

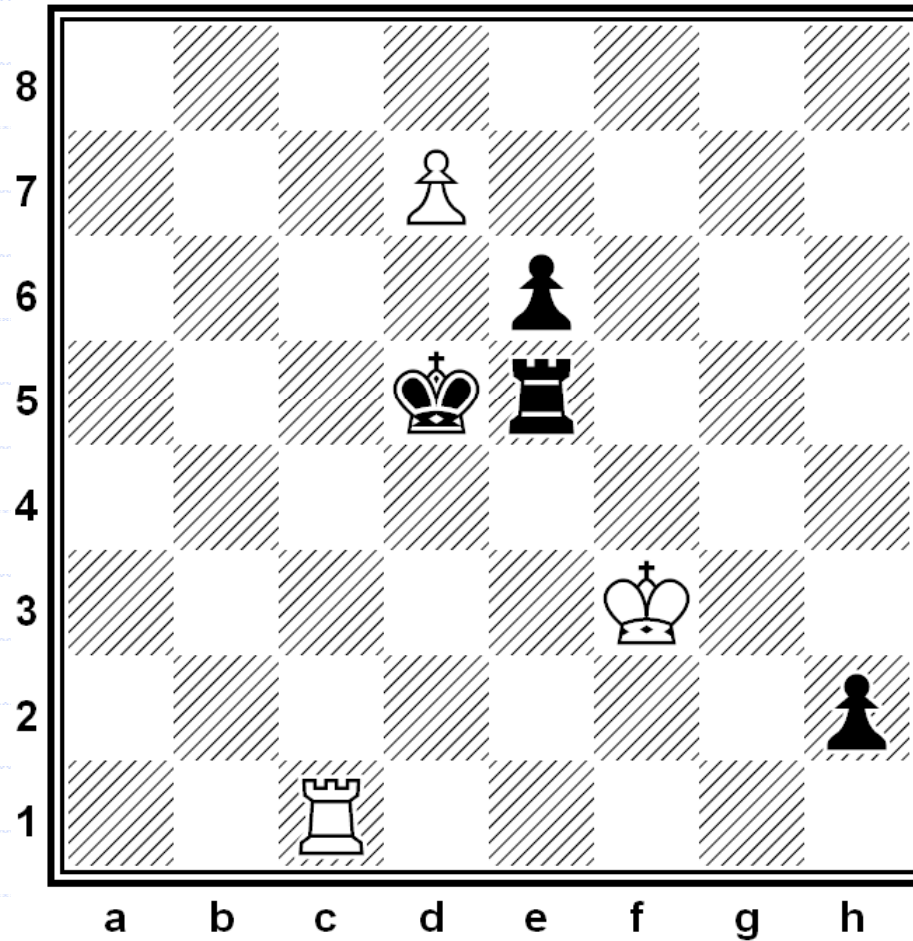
Problem #3





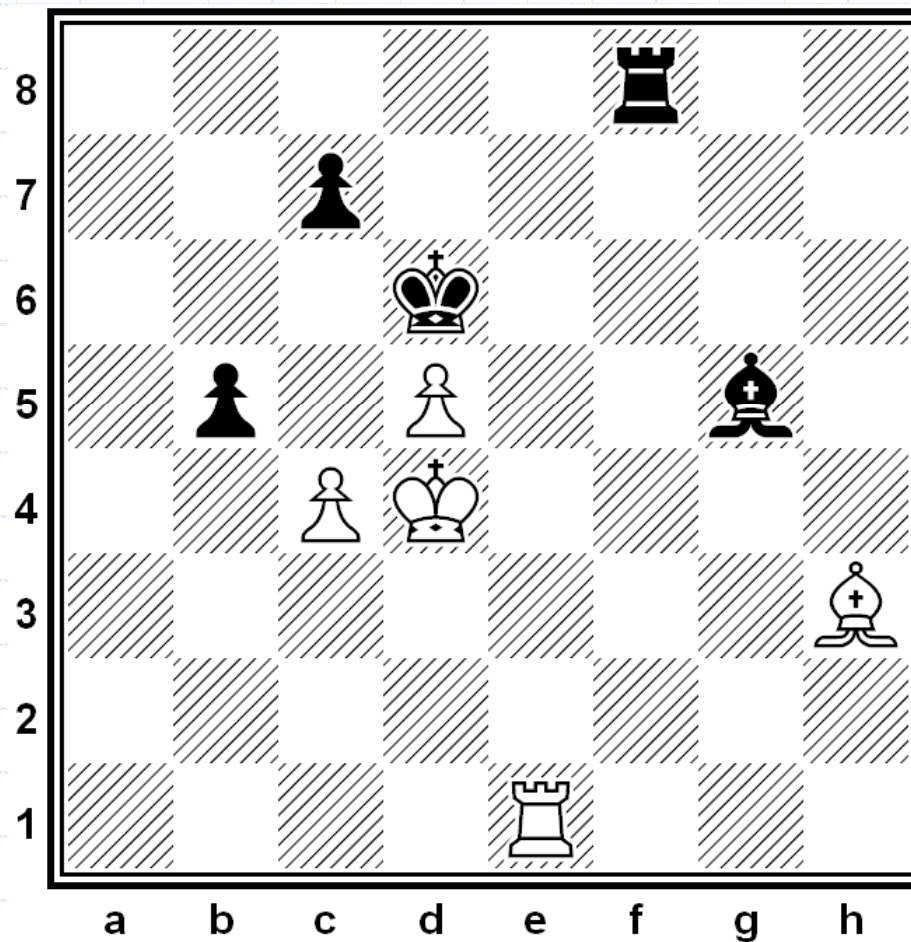
# Mate in 1

Problem #4



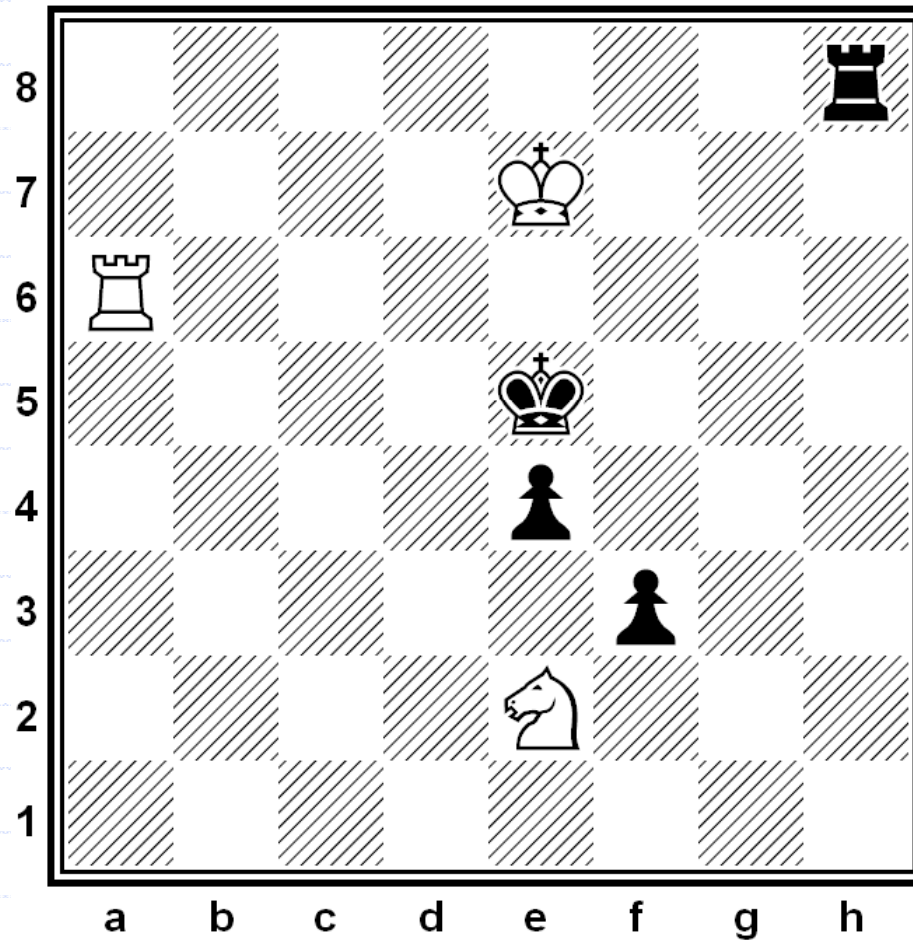
# Mate in 1

Problem #7



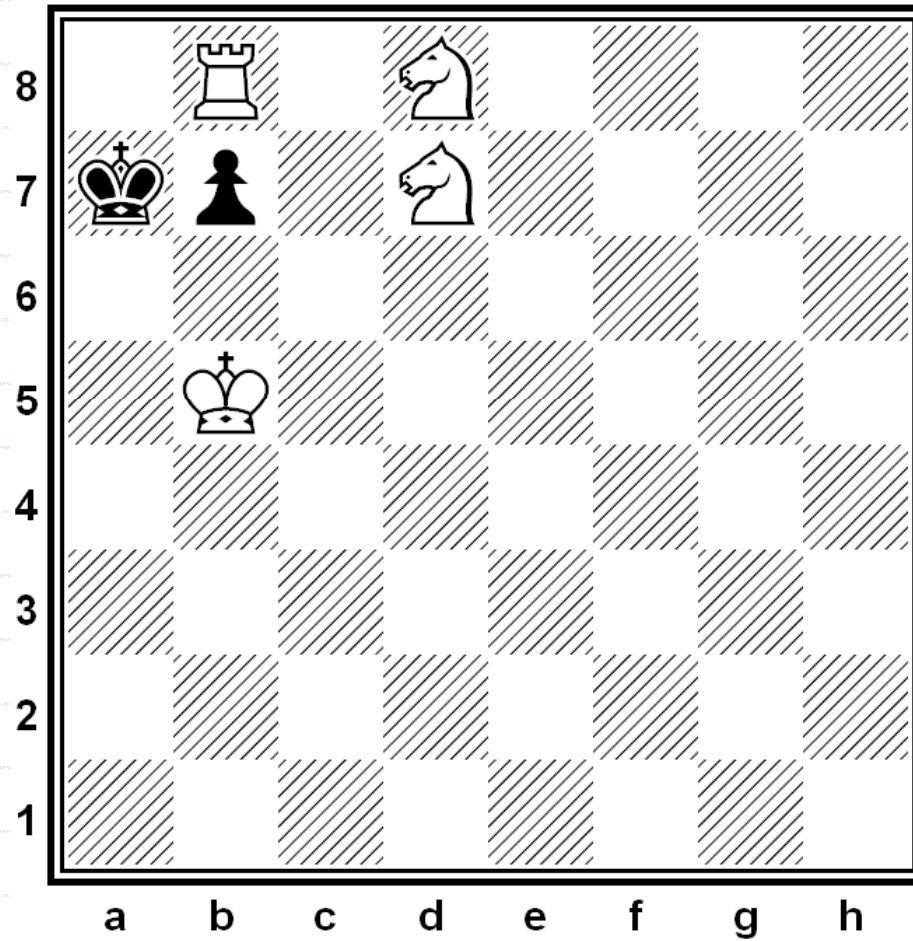
# Mate in 1

Problem #9



# Mate in 2

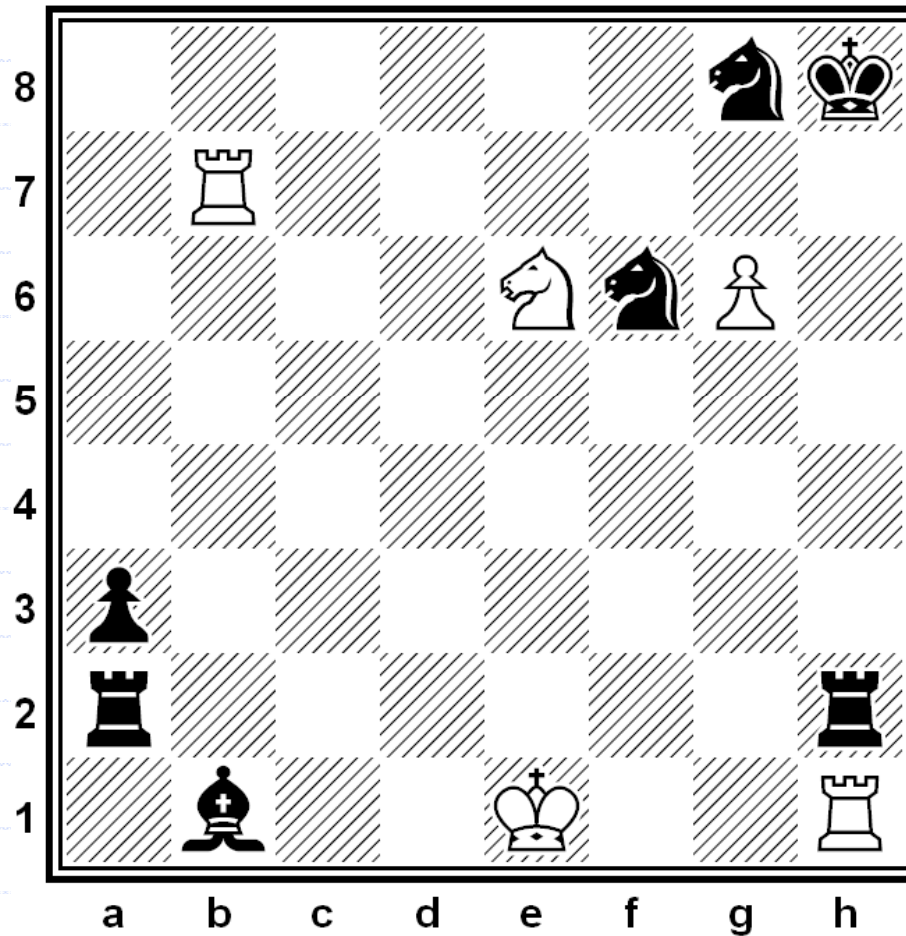
Problem #12





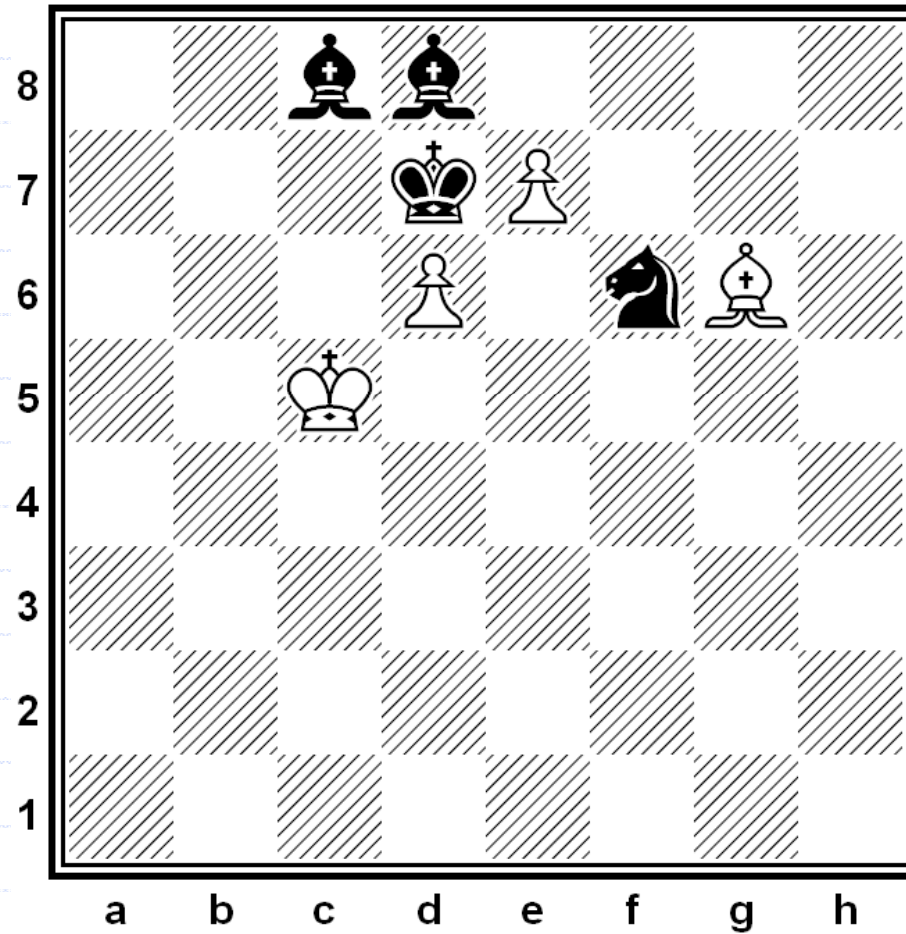
# Mate in 2

Problem #14



# Mate in 2

Problem #17



# Mate in 2

Problem #24

