

Council Wide Campout **Wide World of Scouting**

September 11-12, 2021



Bear Creek Scout Reservation

Alamo Area Council

Council Wide Campout **Webelos Den** **Leaders Guide**

September 11-12, 2021

Bear Creek Scout Reservation

125 Bear Creek Scout Rd W, Hunt, TX 78024

Table of Contents

Event Chairman / Any Questions?	3
Map and Directions to Camp	3
Bear Creek Scout Reservation	3
Program Overview	4
Information for Packs and Webelos Dens	4
Why should Webelos come to Council Wide Campout	4
What is different about Cub Scout Camping and Scouts BSA camping?	4
Council Wide Campout is an opportunity to see what it is really like in Scouts BSA.	4
Can Individual Webelos Scouts Come?	5
Registration	5
Required Paperwork to Bring	5
Camping	6
Parking:	6
Camp Map	7
Schedule	8
Saturday September 11, 2021:	8
Sunday, September 12, 2021:	8
What to Bring to Camp	9
Camp Policies and Procedures	9
The Law is the Rule:	9
Buddy System:	9
Alcoholic Beverages:	9
Smoking:	9
Vehicles:	10
Uniforms:	10
Stoves and Lanterns:	10
Knives, Hatchets, Axes, Chainsaws or Firearms:	10
Rocks and Sticks:	10
Trash:	10
Cleanup:	10
Bathrooms & Bathing	10
CWC 2021 Events	11
Passport Activities	11
Messenger of Peace Service Project	11
Chopstick Relay	11
Palito Verde (Green Stick)	11
Shooting Sports	11
Archery	11
BB Guns	11

Slingshots	11
The Forge	11
Knot Tying and Ropemaking	11
Ken's World Exchange	11
BC Beverage Shack	11
Indian Village	11
COPE Event	12
Cooking Demonstration	12
Cuisine Cooking	12
Utensil-less Cooking	12
Climbing Wall	12
Climbing Wall Training	12
Race to Space	12
International Scouting	12
Communications	12
Rocketry	12
Branding	12
Woggle Tying	12
Model Campsite	12
<i>Vehicle Registration Form</i>	<i>13</i>

Event Chairman / Any Questions?

For all question about Webelos attending the Council Wide Campout, please contact the Webelos Chair, Colby Tate, via email: colbyclay@yahoo.com or by phone at 210.860.6824 (cell)

Map and Directions to Camp

Located in Hunt Texas, Bear Creek Scout Reservation is far removed from the hustle and bustle of the city.

The camp, with acres of hill country wildness, campsites and plenty of high and low places as the creek winds it way eventually into the Guadalupe River has been part of Scouting in the area since 1964.

Bear Creek Scout Reservation

Bear Creek Scout Reservation is located 20 miles west of Kerrville, TX.

From San Antonio:

Take Interstate 10 West for approximately 50 miles past 1604.

Take exit 505 Farm to Market Rd 783/Harper Road

Follow Harper Rd 2.5 miles to Junction Hwy/Hwy 27

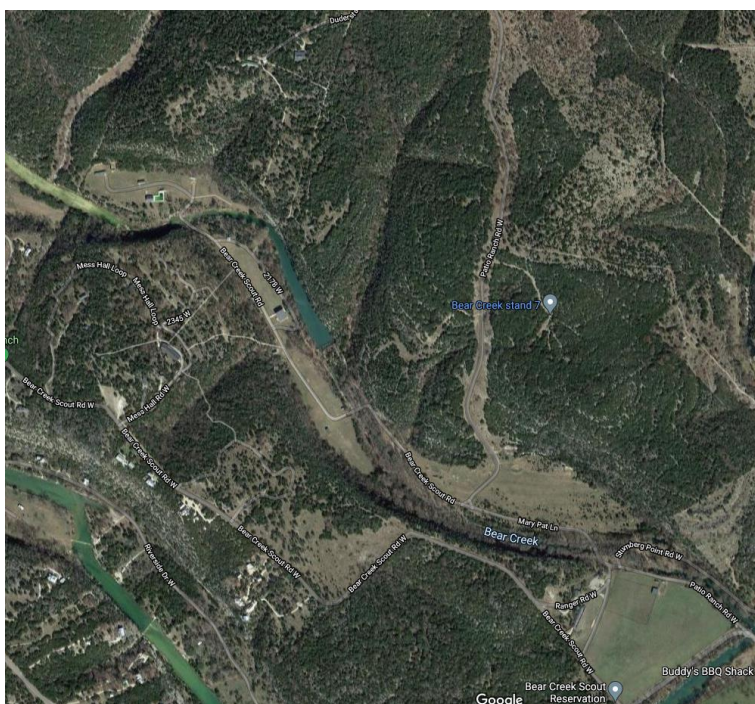
Turn right on Hwy 27 for 5 miles.

In Ingram, Hwy 27 becomes Hwy 39.

Continue straight on Hwy 39 for 6 miles.

Turn right onto FM 1340 and go 6 miles to Bear Creek Road.

Turn right on Bear Creek road and take the First Right to enter Bear Creek Scout Reservation



Program Overview

This CWC event is a Scout BSA weekend with a Webelos component. There are some activities that Webelos Scouts will not be able to participate in, such as .22 rifles, ax throwing and COPE but a lot more they can do. We have tailored a great experience for your Webelos Scouts. The itinerary for Webelos Scouts is below.

The Webelos component is designed to showcase the fun and excitement Scouts BSA has offer to incoming Webelos. Webelos Scouts will be able to participate in Scoutcraft activities, games, and shooting sports next to area Troops, Crews and Ships. Not only will they be having fun at camp, but they may also be fulfilling many of the Webleos and Arrow of Light Adventures listed below:

- Webelos Required Adventures
 - Cast Iron Chef #3
 - Stronger Faster Higher #1,4
 - Webelos Walkabout
- Arrow of Light Required Adventures
 - Outdoor Adventurer #2,3,4,5
 - Scouting Adventure #1,2,4,5
- Webelos/Arrow of Light Elective Requirements
 - Aquanaut #1,2,3,4,6,7,8
 - Castaway #1b,c, 2a,c
 - Game Design
 - Into the Wild #4,5,6,7,8
 - Into the Woods #1,2,3,6,7
 - Sportsman #1,2,3

Den Leaders, please review the list of adventures beforehand as there is some work that will need to be done in the den setting to fulfil the requirements.

Information for Packs and Webelos Dens

Why should Webelos come to Council Wide Campout

Council Wide Campout is an annual event, hosted by Alamo Area Council, for Troops, Crews, Ships and Webleos Dens to come together for a fun filled weekend. Troops, Crews and Ships will arrive Friday night for camp, and there will be activities all day Saturday for them to participate it. Webelos Dens are invited to join in the fun, see what life as a Scout is like, and contact Troops around the area. As fourth and fifth grade Cub Scouts, the setting of Council Wide Campout is more in line with their maturity and ability than a Cub Scout campout.

What is different about Cub Scout Camping and Scouts BSA camping?

Scouts BSA is a whole lot different than Cub Scouts or Webelos Scouts. The idea of graduating from a Cub Scout pack to a Scouts BSA troop may be intimidating for some Webelos Scouts and their parents. Some Webelos may not be sure they want to cross over into Scouts BSA because they believe it will just be more of the same thing that they did in Cub Scouts.

Council Wide Campout is an opportunity to see what it is really like in Scouts BSA.

Yes, it maybe another year before the Webelos Scouts cross over to Scouts BSA but a first year Webelos also need to see and understand scouting does not end with Cub Scouts and Scouts BSA offers new adventures.

The best way to make your decisions, to choose the right troop, and to get your questions answered is to visit several troops that meet close to your home. The Webelos component of Council Wide Campout is designed to help the Webelos Scout, their parents, and their den begin the Webelos to Scout transition. One of the best things you can do is to contact troops in your area.

Selecting a troop to join is an individual decision for each Webelos Scout and their parents. Every troop is different in the kinds of activities they schedule and in their personalities. Each family must choose the troop they feel will best meet their needs. In selecting a troop, you should consider the following factors: Are the troop activities the kind that you would enjoy? How do the Scouts interact with each other? How do the older Scouts interact with the younger Scouts? Are there older Scouts active in the troop? (This indicates if the troop's program is exciting and interesting for a variety of ages.) Is the troop "scout led" or is it run by the adults? (The best answer is the troop is "scout led") Are you comfortable with the adult leaders in the troop? Are the adult leaders trained, do they follow BSA policy, and do they welcome input and participation by all parents? In practice, the decision of which troop to join usually comes down to two factors: convenience of the weekly troop meetings (meeting night and location) and which troop a scouts friends are in.

The Webelos dens are encouraged to talk with as many scout troops as possible and maybe tag along with one; however, this is not required. A den can come to the event as a unit and visit several of the troops camping at Bear Creek.

Can Individual Webelos Scouts Come?

Is your leader too busy to commit to a full weekend of camp? Not a problem. Individual Webelos with a parent can attend the event as a day visitor. Please see the schedule below for times and details.

Registration

To register for the Council Wide Campout, go to the event page on the Alamo Area Council Website

<https://mycouncil.alamoareabsa.org/Event/11155> and follow the instructions for Webelos Scout or

Webelos Den Leader. **Walk-ins will not be allowed at this event.**

Required Paperwork to Bring

Each Scout and Adult Leader will need to have physical copies of the following to be allowed to camp:

- Health Forms A&B
- Current YPT (for anyone over 18 years old)
- Parking Pass for each vehicle.

Camping

All Webelos Scouts will be camping as a group in the valley (see map). No fires are allowed in the Webelos campsite. There will be a large campfire program Saturday night that all are invited to. Same sex scouts may tent together or with their parents/guardians. Adults may only tent with their scout.

Bear Creek is a wilderness area, and as such, campsites need to follow Leave No Trace principles. The following rules are to be followed to ensure the continuing wilderness of Bear Creek:

- Walk, do not run, within your campsite.
- Remember tent stakes and tie downs.
- Closed toed shoes must always be worn.
- Fish may be taken with a hook and line only.
- Do not ditch or trench your tent.
- Leave no Trace.
- Trash your trash. It should be removed from all campsites.
- No pets or bikes.

On Sunday, before leaving, we ask that you police your campsite and ensure that your campsite is completely cleaned up.

Parking:

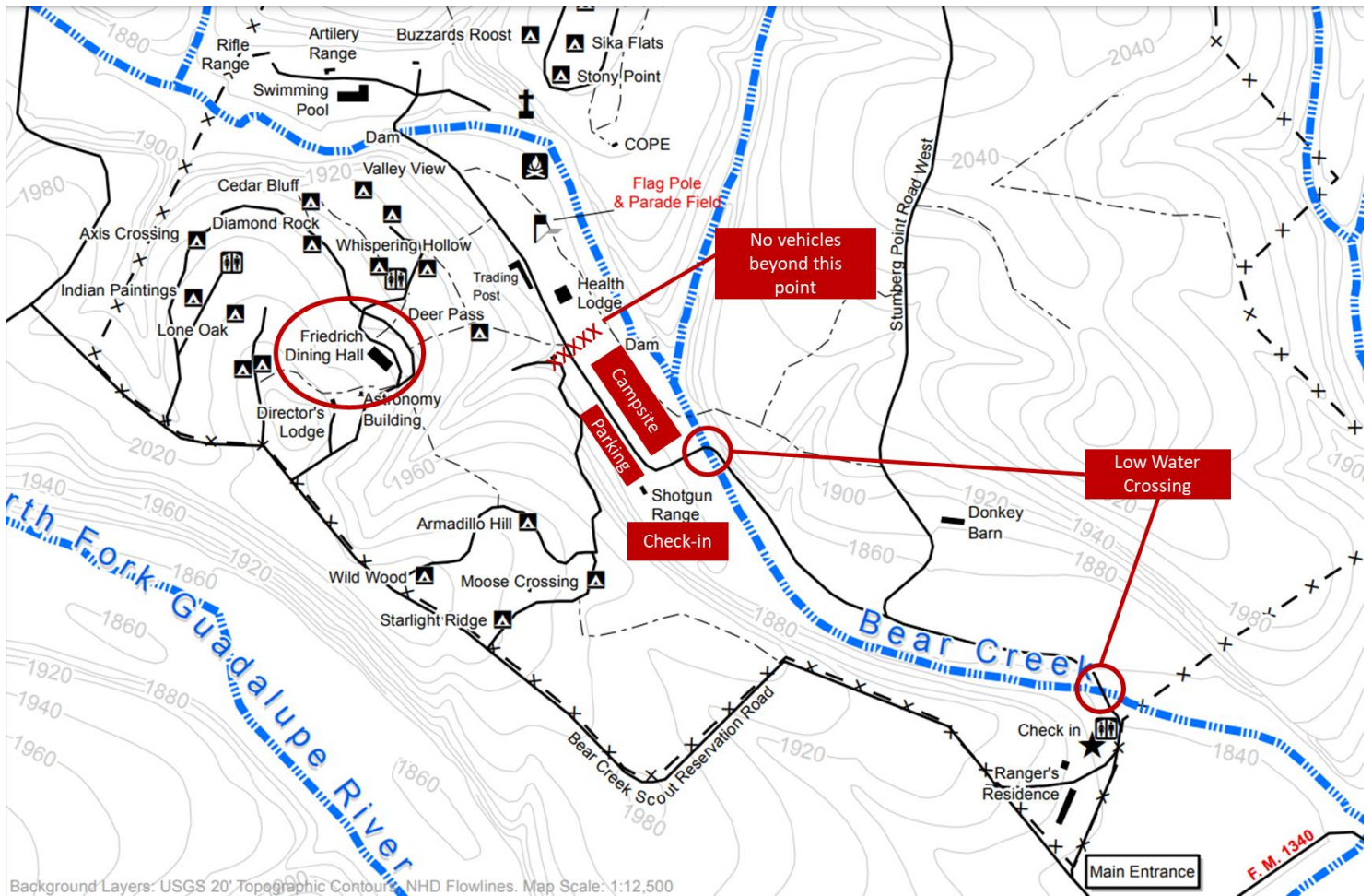
Park in designated parking areas only. Unit leaders need to help enforce this policy. There will be separate parking areas designated for Participants (scout families) and a smaller area for CWC Staff. There will be event areas adjacent to the designated parking that must be kept open and free of vehicles. The only vehicles allowed in the event areas are Authorized Staff.

The Webelos camp sites will be near the participant parking, but vehicles will not be allowed in the camping area. Please be prepared to carry your camping gear from the participant parking area to the camp site.

A very limited section for handicap parking will be designated at the point closest to the activity areas in the valley but will only be available to qualified individuals that are issued a Handicap Parking pass. There are no paved walkways, and the check-in point can be several hundred yards from the closest available parking.

We need to help preserve Camp. Each Unit Leader will be emailed vehicle parking passes based on the number of vehicles listed on the Vehicle Registration form (see page XX). This form must be sent to Colby Tate at colbyclay@yahoo.com by August 21st. Prior to the event, the Unit Contact will be emailed parking passes that **MUST** be placed on the driver's side dashboard of each vehicle *before you arrive* at Bear Creek. There is a very limited amount of parking, so we ask that Webelos carpool as much as possible.

Camp Map



There are two low water crossings prior to arriving at the campsite. The speed limit is 2 mph, to not cause erosion.

Parking and check-in are directly after the second water crossing. Please park on the left side of the road check in near the shogun range and carry your camping equipment to the campsite. No vehicles will be allowed to unload in the campsites.

Saturday Lunch, Dinner and Sunday Breakfast will be served at the Friedrich Dining Hall. It is "up the hill" from the campsite and there are two trails from the valley to the dining hall. Cardiac is a straight climb from the Health Lodge through Deer Pass Campsite to the dining hall. Switchback is from the Flag Pole up to Whispering Hollow and is slightly easier as it is not a direct climb.

Schedule

Saturday September 11, 2021:

Time	Activity
7:00 – 8:00 AM	Check -in
8:00 – 11:30 AM	Activities
Noon – 1:00 PM	Lunch at the Friedrich Dining Hall
1:00 – 4:30 PM	Activities
5:30 – 6:00 PM	Dinner at the Friedrich Dining Hall
Sundown	Flag Retreat performed by Staff/OA
7:30 PM	Camp Wide Stage Show 9/11 20 th Anniversary Remembrance and Flag Retirement Ceremony
11:00 PM	Lights Out

Sunday, September 12, 2021:

Time	Activity
7:00 – 7:30 AM	Breakfast at the Friedrich Dining Hall
8:00 AM	Flag Ceremony performed by Staff/OA
8:05 AM	Scouts Own Service and Closing Ceremony
8:30 – 11:30 AM	Unit Departure / Camp Cleared

What to Bring to Camp

Below is the list of camping gear needed for the weekend. Please check the weather and Be Prepared.

(Tents will not be provided)

Personal Gear:

- Scout Uniform
- Medical Form
- Handbook
- T-shirts
- Pants
- Socks and Underwear
- Footwear
- Warm Clothes
- Sleeping bag
- Sleeping pad (Optional)
- Toilet Kit (toothbrush, towel, soap, etc)
- Water bottle
- Flashlight (extra batteries)
- Pen and paper
- Be Prepared for the weather (Continue to check the report on the news the week before you arrive)
- Pocket Knife (If you have your Whittlin' Chip card)
- Watch (Optional)
- Sunglasses (Optional)
- Tent

Camp Policies and Procedures

Anyone participating in this event will be expected to follow BSA National Guidelines as outlined in the Guide to SafeScouting.

The Law is the Rule:

Everyone is expected to abide by the Scout Law, Motto and Oath.

Buddy System:

Everyone will use the Buddy System. Pairs for Safety. Adults/ Leaders should be notified before Scouts leave their campsites.

Alcoholic Beverages:

This will not be tolerated and is against BSA policy. Possession or use will result in immediate dismissal from camp.

Smoking:

BSA guidelines require a smoke-free environment for our scouts. If you must smoke, please do so out of sight of youth participants and not inside any buildings. Please "field dress" your butts and dispose of them properly remembering the ever-present danger of brush fires. Smoking include vaping and e-cigs.

Vehicles:

The health and safety committee along with the camping committee has established a written policy and procedure of vehicles in camp.

- NO Webelos vehicles will be allowed in campsites.
- 3 MPH (Walking speed) speed limit.
- One person per seatbelt and they must be worn. No riding in truck beds. No RV's, ATV's, golf carts or generators.

Uniforms:

Field uniform also known as a "Class A" uniform should be worn at ceremonies (as well as other free time programs /Vespers and / or Flag Retirement). Activity uniform also known as a "Class B" (Scouting appropriate) t-shirts are permitted during event activities.

Stoves and Lanterns:

Follow BSA regulations according to fuels. Keep open flames out of and away from tents.

Knives, Hatchets, Axes, Chainsaws or Firearms:

No firearms are permitted at Camp. No chainsaws are permitted. No fixed blade, sheath or survival knives are permitted. Folding or pocketknives are permitted by those Scouts that have earned their Whittlin' Chip. Please ensure that your scout has their Whittlin' Chip card on them to be allowed to use knives. Axes and Bow Saws are only permitted in axe yards of Scouts BSA Troops / Venture Crews.

Rocks and Sticks:

Although tempting, rocks must not be thrown or kicked, and sticks may not be swung. Walking sticks should have one end on the ground. Injury/damage to people or property usually results from these inappropriate actions. Such actions will result in your being asked to leave the campout immediately.

Trash:

Remember to trash your trash. Scouts should leave no trace either in the campsite or anywhere else on the property. Proper trash receptacle will be placed around the activities and camp. Please use them.

Cleanup:

When your unit is ready to leave camp, we ask that you please clean up your area and leave it the same or better than you found it. Trash should be bagged in 55-gallon trash bags and placed along the road for staff to collect.

Bathrooms & Bathing

There are bath houses in camp with showers and uni-sex bathrooms. We ask that you be considerate others while utilizing these accommodations.

CWC 2021 Events

Passport Activities

Participation in the following activities provide Scouts the opportunity to earn this limited-edition patch. Leaders need to give each Scout a passport (**included in check-in packet**). To earn the Passport patch, each Scout must complete 10 activities (**including the mandatory service project**) and have the Passport signed by Event Staff. Upon completion, each Scout should take their completed passport to the **Eco-Pavilion** to receive their Passport patch.

Messenger of Peace Service Project

Scouts and adults that participate in the Service project are eligible to earn the Messenger of Peace Award. The requirements are –

- Complete a qualifying service project.
- Have your unit leaders report service hours on “Internet Advancement” and purchase your badge with other Scout awards at your local scout shop or through the Scout Shop.
- The Messengers of Peace rings are available to all scouts who complete MOP projects.

Chopstick Relay

Test your chopstick skills in this relay.

Palito Verde (Green Stick)

Try to play a game from Columbia. See if you can figure out what game played in the USA that is similar to this game.

Shooting Sports

Archery

This event is open to Webelos Scouts. Scouts will learn to properly and safely shoot arrows at archery targets which was used by our American Indians.

BB Guns

This event is open to Webelos Scouts. Scouts will learn to properly and safely shoot BB guns at targets.

Slingshots

This event is open to Webelos Scouts. Scouts will learn to properly and safely shoot slingshots at targets.

The Forge

A great place to learn how Blacksmiths did things. Bring something that has parent/guardian approval to be branded. There will be items (including cups) available at *Ken's World Exchange* for purchase.

Knot Tying and Ropemaking

Learn how to tie knots and make rope. These are skills used in many countries around the world.

Ken's World Exchange

Candy, snacks and more. Bring some cash.

BC Beverage Shack

Stop by for some refreshing drinks to quench your thirst. We will be serving a variety of drinks from all over the world.

Indian Village

Come by and see how technology has evolved from Native American Indians.

COPE Event

Limited activities for Webelos Scouts. Challenging Outdoor Personal Experience. It comprises group initiative games and low and high-course activities. Some activities involve a group challenge, while others test individual skills and agility; only a few require athletic strength.

Cooking Demonstration

Cuisine Cooking

Learn how to cook exquisite food from around the world.

Utensil-less Cooking

Learn how to cook without using utensils.

Climbing Wall

Climbing is a popular event around the World. Come by the Compton Climbing Center and test your skills for climbing wall.

Climbing Wall Training

The Climbing Committee will be offering a one-day training for registered adult leaders. Cost is \$5.00 per person and training will start Saturday morning and end no later than 4:00 pm. Completion of this course qualifies Adult to safely facilitate a climbing event for their unit using the Compton Climbing Center only. Registration can be found on the AAC Website. The number of participants is limited so register early to make sure you get a spot.

Race to Space

Learn how many countries wanted to be the first to put a man on the moon.

International Scouting

Learn about Scouting around the World.

Communications

Jamboree on the Air and Ham Radio. Talk to Scouts and people from all over the world.

Rocketry

See how high you can get your rocket to fly.

Branding

Make sure you bring an item to be branded, and it cannot be your younger brother or sister!

Woggle Tying

A skill used by Scouts all over the world. Try your hand at making your own Woggle.

Model Campsite

Come see how a campsite should be set up for safety.

Vehicle Registration Form

Councilwide Camp Out Vehicle Registration

[illegible]